

**Product Specification** 产品规格书 <sup>1</sup>

SOLAR PANEL Model NO/太阳能电池板型号: PG-120X62-001			
Solar Cell Size/晶片尺寸: 52*7.8mm		Solar Cell Type/电池片类型: 采用高转换效率多晶硅片 /High efficiency Poly crystalline	
Encapsulation Method/太阳能电池板生产工艺: PCB laminated/PCB 压封装			
项目 Project	序号 NO	项目名称 Item	指标 Criterion
Solar Panel/ 尺寸 (MM)	1	Length/电池板长度	120mm (±0.3mm)
	2	Width 电池板宽度	62mm (±0.3mm)
	3	Thickness/电池板厚度	3mm (±0.3mm)
Appear ance/ 外观	1	Scratch/外划伤	Without obvious scratch and damage/表面无明显划痕受损气泡等
	2	Stripping/剥离	Without peeling off/表面无明显脱落剥离等现象
	3	Discerption/组件断片	Component without fracture/组件完整无断裂现象
	4	Breakage/电池片破裂	No cracks affecting performance/电池片完整无影响性能的 裂痕
	5	Arrangement/外观硅片排列	Neat and uniform/一致、整齐
电性能 Electri cal perfor mance	1	Open-circuit voltage/ 开路电压(Voc V)	6V
	2	Short-circuit current/ 短路电流(Isc mA/A)	143mA
	3	Voltage at nominal power/ 最佳工作电压 Vmp(V)	5V
	4	Current at nominal power/ 最佳工作电流(mA/A)	130mA
	5	Power at nominal/ 最佳工作功率 (W)	0.65W (±5%)
	6	Solar Cell Efficiency 电池片转换效率	≥20%
	7	测试条件 Testing condition	标准光强(38000LUX ) Standard Testing Condition(STC)= Irradiance 1000W/Square M(About 38000LUX), Temperature 25°C degree, AM=1.5

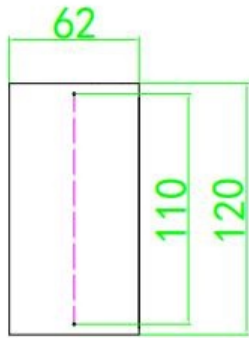
**Product Specification** 产品规格书 <sup>2</sup>

<b>Work Environment &amp; Notes</b> 工作环境	1	Working Temperature/ 温度	-20°C~ 80°C under the STC testing condition.
	2	Humidity/湿度	5-95%
	3	Temperature Coefficient of Pmax/ 功率温度系数	-(0.47+/-0.05)%/C degree
	4	Temperature Coefficient of Voc/ 电压温度系数	-(0.34+/-0.01)%/C degree
	5	Temperature Coefficient of Isc/ 电流温度系数	(0.045+/-0.01)%/C degree
<b>工作寿命</b> <b>Lifetime</b>	5 年 Five years		

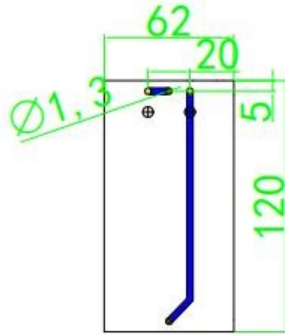
<b>Materials &amp; Connections</b> 主要材料与连接方式	1	PCB glass fiber board PCB 玻纤板	1.6 MM PCB glass fiber board 1.6MM PCB 玻纤板
	2	Glue 胶水	Epoxy glue 环氧树脂胶
	3	Output Connection 输出连接方式	Wiring on the back 背面接线
	4	Polarity/正负极性	By drawing of the index/如图所示
	5	电池片连接形式 Type of connection	10pcs in series connection/10 片串联
6. Solar Panel mainly apply for the outdoor lighting condition, the output voltage/power will effected by the lighting directions, storage load etc.			

**Product Specification** 产品规格书 3

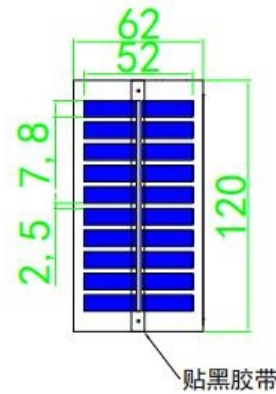
设计图纸 / Drawing design



底板正面  
Backplane positive



底板反面  
Floor opposite



排片图  
Row piece figure

备注: 1.6mm FR4玻纤板, 双面黑油, OSP工艺, 底板正面的辅助线需画出来, 底板反面的正负极符号需丝印成白色。  
Note: 1.6mm FR4 fiberglass board, double-sided black oil, OSP process, backplane positive auxiliary line must be drawn across the electrodes of floor opposite symbols must be printing white.

GENERAL TOLERANCES ISO 2768-Medium (limits in mm for nominal sizes in mm)							
Tolerance class	0.5-3	>3-6	>6-30	>30-120	>120-400	>400-1000	>1000-3000
Linear	±0.1	±0.1	±0.2	±0.3	±0.5	±0.8	±1.2
Radius & Chamfer	±0.2	±0.5	±1	-	-	-	-

TITLE	120*62*3MM 5V/130MA	1.0	Initial release	罗成奇	卢志刚	2022/06/28
TYPE	UNIT	mm	VIEW	REV	DESCRIPTION	DWN CKD DATE